

OUTSIDE AIR TEMPERATURE GAGE - MAINTENANCE PRACTICES

1. General

- A. The airplane is equipped with a mechanical outside air temperature gage (OAT Gage). The gage is calibrated in both degrees Fahrenheit and Centigrade. It is located at upper left corner of windshield and extends up through fuselage.

2. Outside Air Temperature Gage Removal/Installation

- A. Remove Outside Air Temperature Gage (Refer to Figure 201).

- (1) Unscrew sunshield tube (1) from OAT Gage (2), holding jamnut (3) in place.

NOTE: OAT Gage (2) must be held while removing or installing sunshield tube.

- (2) Slip sunshield tube (1) off of OAT Gage (2).

- (3) Remove washer (4) and grommet (5) from surface of airplane skin (6).

- (4) Remove OAT Gage (2), washer (7), and grommet (8) from airplane.

- B. Install Outside Air Temperature Gage (Refer to Figure 201).

- (1) Position OAT Gage (2) through airplane trim panel (9), assuring jamnut (3), washer (7), and grommet (8) are in place on the OAT Gage.

NOTE: Screw jamnut (3) out on OAT Gage (2) threads so that washer (7) and grommet (8) are pressed against fuselage (6) and sufficient clearance is allowed between OAT GAGE (2) dial and fuselage (6) for trim panel (9).

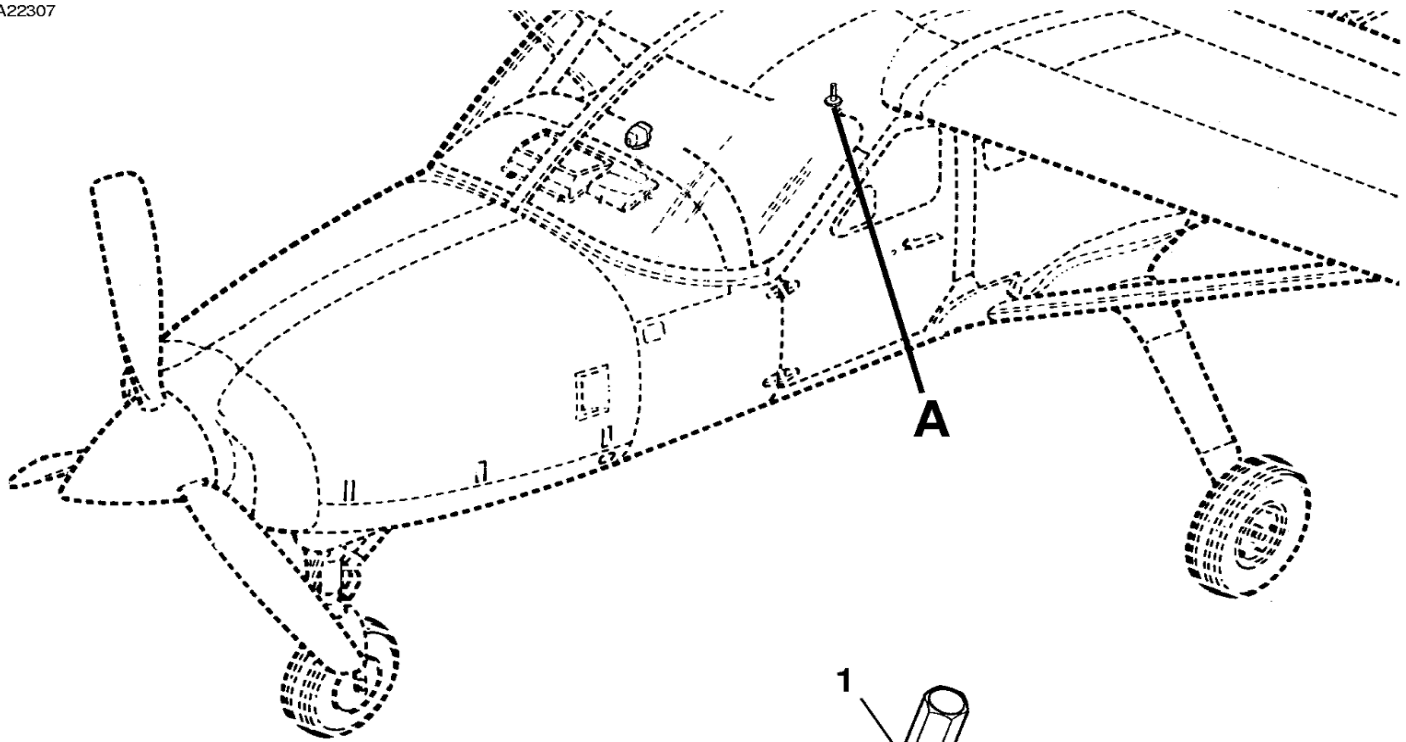
- (2) Slip grommet (5) and washer (4) onto OAT Gage (2).

- (3) Screw sunshield tube (1) onto OAT Gage (2), while holding OAT Gage (2) in place.

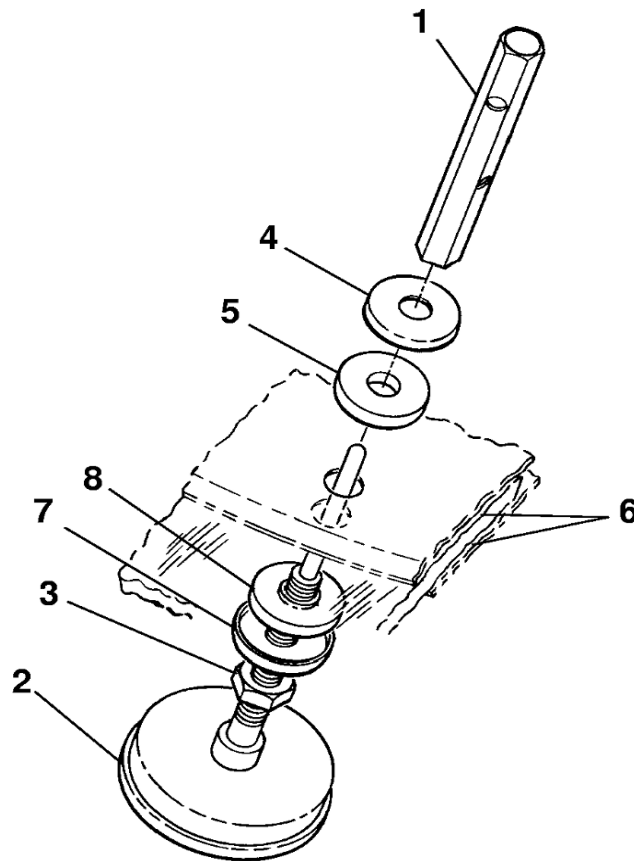
NOTE: Top end of sunshield tube (1) should extend 0.50 inch beyond the top of OAT Gage (2) stem.

Figure 201 : Sheet 1 : Outside Air Temperature Gage Installation

A22307



1. SUNSHIELD
2. OAT GAGE
3. JAMNUT
4. WASHER
5. GROMMET
6. SKIN
7. WASHER
8. GROMMET



DETAIL A

26181151
A26181147